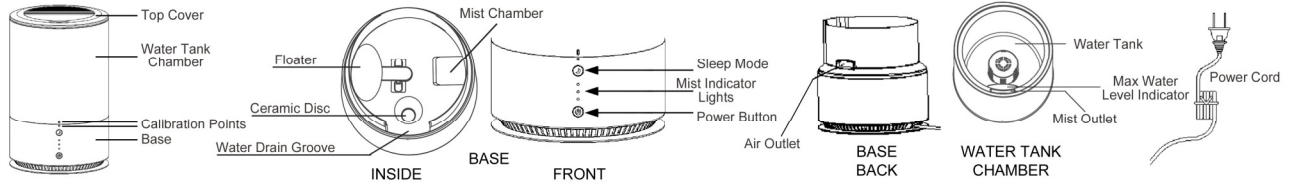


MegaMist™ Essential Oil Diffuser and Humidifier INSTRUCTIONS

PARTS



FEATURES

FIRST EVER essential oil diffuser and cool mist humidifier! Add essential oil directly to the water and enjoy therapeutic benefits.

1. Water Capacity: 1.8 L (60.86 fl oz)
2. Suggested Room Size: Up to 500 sq ft
3. Continuous Run Time: HIGH: Up to 6 hours
MEDIUM: Up to 10 hours
LOW: Up to 18 hours
** Run time will vary depending on humidity levels and other external factors.*
4. Light Mode: Power and Indicator Lights
5. Sleep Mode
6. Automatic safety shut-off
7. Power: c UL us certified Power Cord

CARE & MAINTENANCE

Essential oil should not come in contact with the exterior surface of the unit.

Use two hands on the Base when moving your humidifier. Do not lift by the Water Tank Chamber as it is not attached to the Base.

TO CLEAN:

Unit has detachable parts for easy cleaning. Top Cover and Water Tank Chamber are dishwasher safe (top rack only). When replacing the Water Tank Chamber onto the Base, align the Calibration Points.

The Water Tank is injected with antimicrobial agent that prevents microbial build up in the water during extended use.

Empty the water in the Base from the Water Drain Groove. The Ceramic Disc should not come in contact with any hard or sharp objects. To remove possible buildup, rinse the Base with a white vinegar and water solution. Dry thoroughly with a soft cloth. Do not use strong cleaning agents.

INSTRUCTIONS FOR USE

Place unit on a flat, water-resistant surface.

1. Remove the Top Cover and Water Tank Chamber. Remove the tape from the Floater found inside the Base. Replace the Water Tank Chamber by aligning the Calibration Points.
2. Fill the Water Tank Chamber with tap water up to the Max Water Level Indicator. Do not overfill. DO NOT ADD WATER TO THE BASE. Add approximately 10 drops of essential oil per 1 Liter of water.
3. Replace the Top Cover onto the Water Tank Chamber.
4. Plug the Power Cord into an electrical wall outlet. It will take a few minutes for the essential oil to blend with the water before fragrance begins diffusing.
5. **Button Functions:**

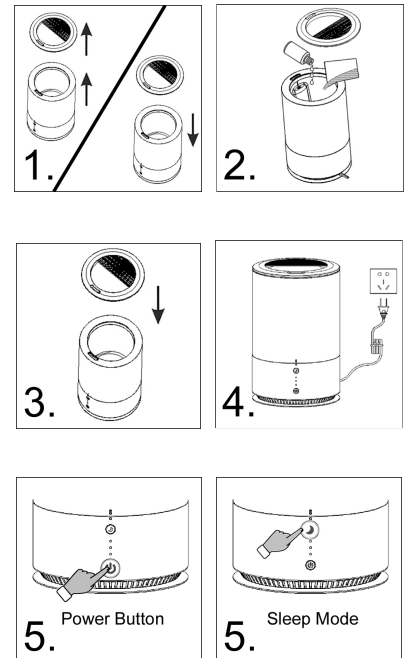
Power:

- 1st Push = Continuous mist at High intensity with top Mist Indicator Light On
- 2nd Push = Continuous mist at Med intensity with middle Mist Indicator Light On
- 3rd Push = Continuous mist at Low intensity with bottom Mist Indicator Light On
- 4th Push = Mist and Indicator Lights Off; Power Button Light On

Press and hold the Power Button for 3 seconds at any time to turn unit off completely.

Sleep Mode:

- Power Button must be On to activate Sleep Mode.
- Press the Sleep Mode Button. Mist intensity will automatically adjust to maintain a comfortable level of humidity.
- Press Power Button again to turn Sleep Mode Off and return to normal operation.



NOTES:

- Only use 100% pure essential oil. Other types, such as fragrance and synthetic oils, may cause corrosion that can damage your diffuser and void our warranty.
- The unit will stop misting when water level becomes too low.
- Disconnect the Power Cord from electrical outlet when not in use.