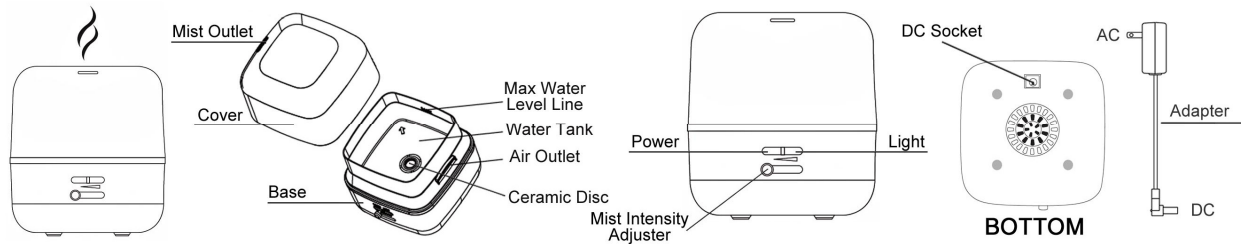


GuardianAir® Ultrasonic Essential Oil Diffuser INSTRUCTIONS

PARTS



FEATURES

Ultrasonic vibrations transform your essential oil and water into healthy, fragrant mist.

1. Water Capacity: 400 mL (13.5 fl oz)
2. Coverage Area: Up to 300 sq ft
3. Continuous Run Time: Up to 8 hrs (High);
Up to 20 hrs (Low)
4. Mist Shut-Off Timer: 1, 3 or 6 hours
5. Light Mode: Breathing, rotating color, freeze color or Off
6. Mist Intensity Adjuster
7. Automatic safety shut-off
8. Power: AC adapter included, c ETL us approved

CARE & MAINTENANCE

Only use the power cord supplied with the unit. Always remove the power cord before cleaning. Essential oil should not come in contact with the exterior surface of the unit.

TO CLEAN:

* SpaRoom® KLENZOR™ tablets may be used to renew diffuser to like-new condition.

Remove Cover. Empty the water away from Air Outlet. The Ceramic Disc should not come in contact with any hard or sharp objects. To remove possible buildup, gently use a cotton swab dipped in white vinegar to wipe out the inside.

Dry with a soft cloth to avoid mineral buildup. Do not use strong cleaning agents.

INSTRUCTIONS FOR USE

Place diffuser on a flat, water-resistant surface.

1. Remove the Cover from the Base.
2. Fill the Water Tank with tap water up to the Max Water Level Line. Do not overfill or mist output may be low. Add 5 to 7 drops of essential oil to the Water Tank.
3. Replace the Cover onto the Base.
4. Insert the Adapter's DC connector into the DC Socket on bottom of the unit. Then plug the Adapter into an electrical wall outlet.

5. Button Functions:

Left Side – Power:

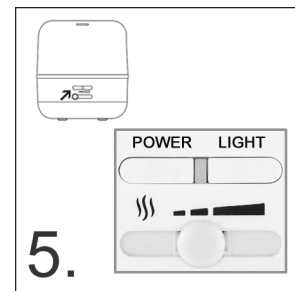
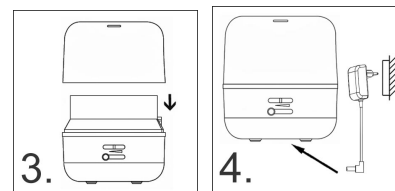
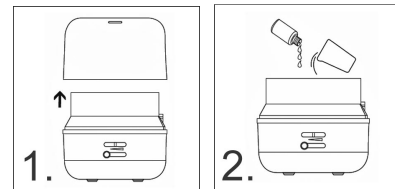
- 1st Push = Continuous mist
 - 2nd Push = Continuous mist for 1 hour with red button light
 - 3rd Push = Continuous mist for 3 hours with green button light
 - 4th Push = Continuous mist for 6 hours with blue button light
 - 5th Push = Turns unit Off
- Press Power Button for 3 seconds at any time to turn unit off.*

Right Side – Light:

- 1st Push = Warm white light with breathing effect
- 2nd Push = Rotating color
- 3rd Push = Freeze color
- 4th Push = Turns light Off

Mist Intensity Adjuster:

- Slide Adjuster to the right for highest mist intensity
- Slide Adjuster to the left for lowest mist intensity



NOTES:

- The unit will turn off when water level becomes too low.
- Disconnect Adapter from electrical outlet when not in use.