

jooki

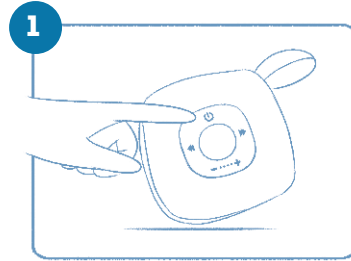
QUICK STARTUP GUIDE

GET STARTED!



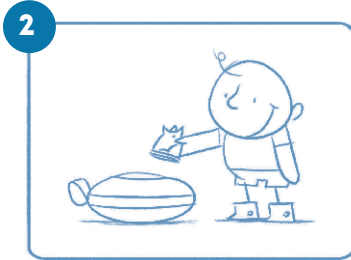
Go to this web page:

<https://setup.jooki.rocks>



PRESS firmly
on power button

Wait 50 sec
for the sound



POP
character
on Jooki

////////// Listen to preloaded music //////////

3 SETUP
your Jooki
<https://setup.jooki.rocks>

4 CREATE
your playlists
<https://howto.jooki.rocks>

////////// Listen to your music & stories! //////////

AUDIO STREAMING SERVICES

SPOTIFY



LISTEN OUT LOUD WITH
SPOTIFY CONNECT



A Spotify Premium subscription is required to listen on your Jooki. Visit spotify.com/premium to go Premium.

1. Connect your Jooki to your wifi network.
2. Open up the Spotify app on your phone, tablet or laptop using the same wifi network.
3. Play a song and select Devices Available.
4. Select your Jooki and start listening.

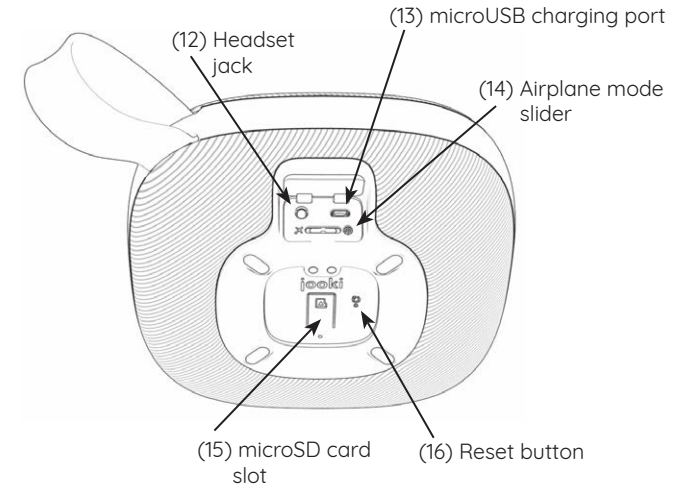
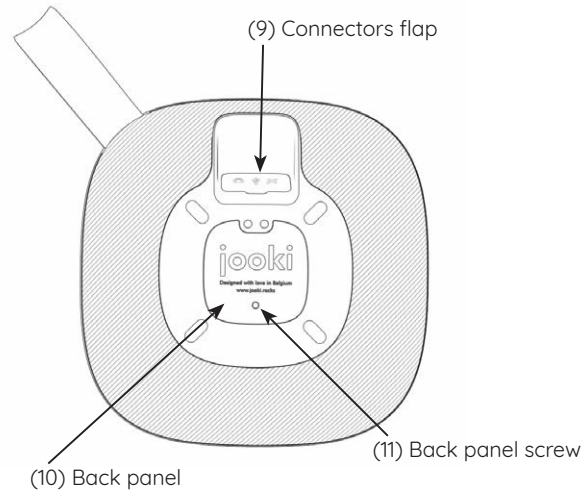
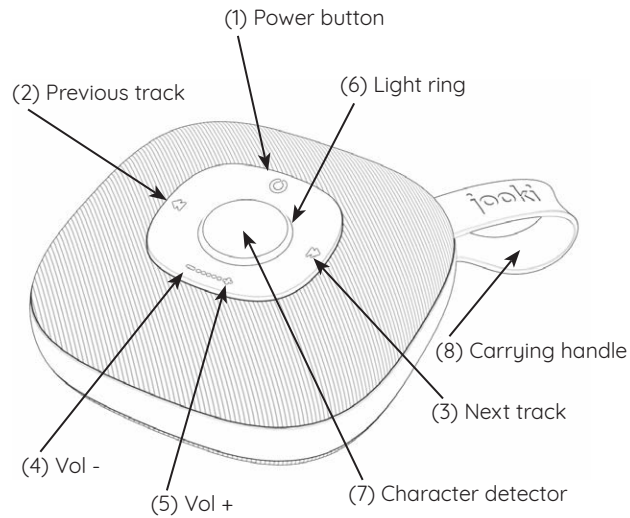
Have a free account? Check www.jooki.rocks/spotifyfree

The Spotify Software is subject to third party licenses found here: www.spotify.com/connect/third-party-licenses.

DEEZER

A Deezer Premium or Family subscription is required to use Deezer on your Jooki. Visit deezer.com/offers to go to Deezer's plans & offers.

1. Connect your Jooki to your wifi network.
2. In the Jooki app, go to "Create Playlist" and select Deezer. You're sent to your Deezer account to log in.
3. All your Deezer's playlists appear in the Jooki app.
4. Select the playlists you want to listen to and link them to characters.



POWER ON/OFF & SLEEP MODE

Power on: Firm press on power button (1).

Wait 50 sec for the wake-up sound. Jooki is ready!

Power off: Jooki automatically switches off after 15 min.

Or press 2 sec on power button (1).

CHARGING

USB charging: Open the connectors flap (9) and connect the USB charging cable to the microUSB charging port (13). Use a standard USB charger (not included).

CONNECTING HEADPHONES

Wired headset: Plug in headphones in the headset jack (12).

AIRPLANE MODE

Activate airplane mode: Push the airplane mode slider (14) to the left and hold it for 10 sec. A sound will notify you that the airplane mode is on. Wifi is now disabled. When airplane mode is activated, all online services are not accessible and you cannot connect to Jooki with the app (mobile or web). In airplane mode, Jooki can only play content that is stored on the microSD card (not included).

Turn airplane mode off: Push the airplane mode slider (14) to the right and hold it for 10 sec. A sound will notify you that the wifi connection is back on.

INSERTING MICRO SD CARD (NOT INCLUDED):

Unscrew the back panel screw (11) and remove the back panel (10). Slide the microSD card (not included) in the microSD card slot (15) and gently push until you feel the card click into place. Replace back panel (10) and screw (11).

FAQ & TROUBLESHOOTING

If you have trouble connecting to Jooki, configuring its wifi or otherwise, you can find explanations, how-to videos and more at <https://support.jooki.rocks>

THE CHARACTERS >>>

