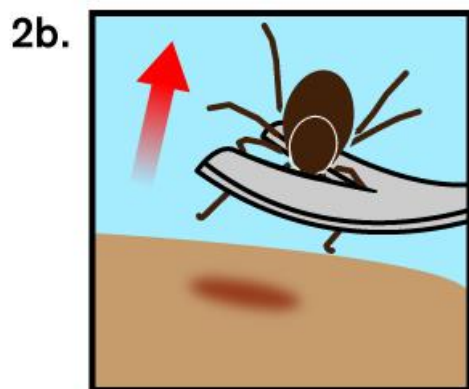
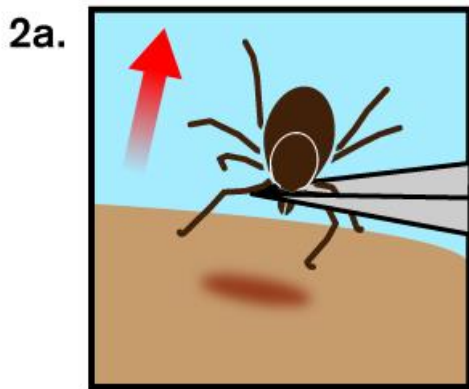
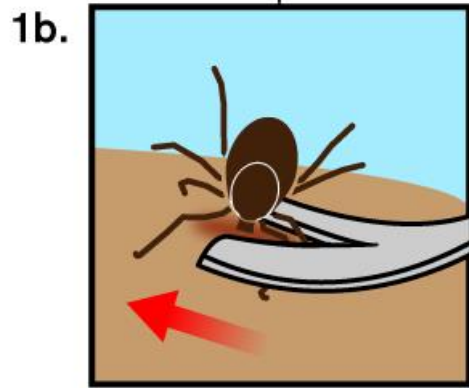
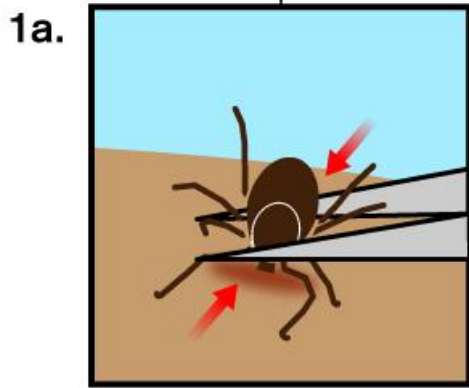


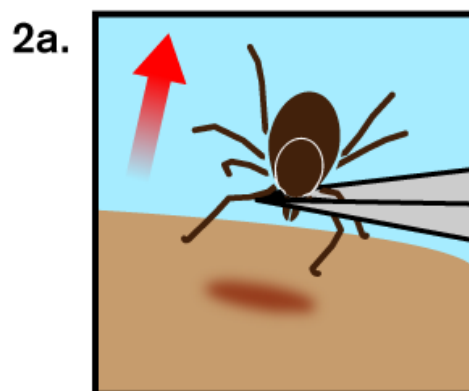
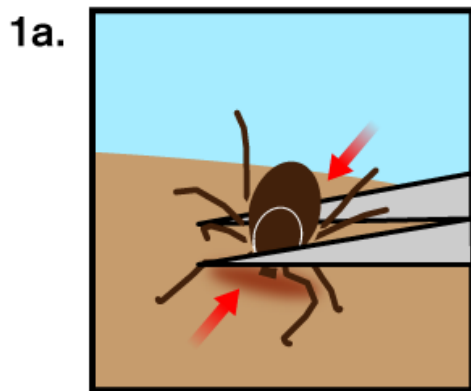
TickEase Use Instructions



A: Use the thin-tipped tweezers for small ticks.

1a. Place the tips of TickEase® as close to the skin as possible. Grasp the tick firmly where the mouth parts enter the skin.

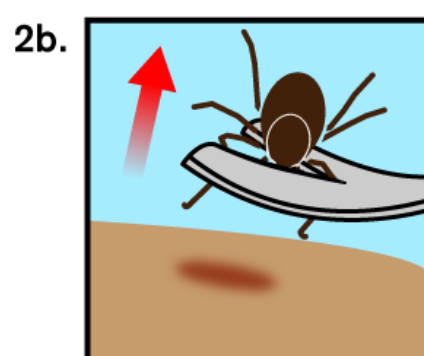
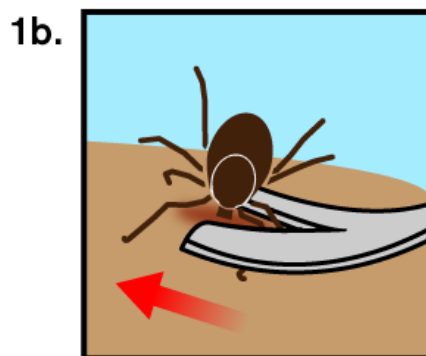
2a: Pull upward with a steady, even pressure. Never twist or jerk the tick out. Pulling straight up will minimize breaking the tick.



B: Use the slotted scoop for large ticks. (Often on animals)

1b: Place the slotted scoop against the skin. Slide the scoop under the tick's mouth parts and as far back as possible.

2b: Lift the tick straight upwards with steady even pressure until the tick is removed.



After Removal

The very first step is making sure to cleanse the spot thoroughly using antibacterial soap. The area of the bite will have an indentation, and cleaning **must** be done immediately after removal. The bite site should be observed for the next few days. Applying anti-bacterial cream for extra protection and keep the site clean.

Hands that have been contaminated with a tick's body fluids must also be thoroughly washed with soap and warm water. Proper wound treatment is an absolute must.

If you or your pets start experiencing any symptoms of tick-borne illnesses like Lyme disease, you should consult a physician or veterinarian immediately.

Tick Testing

Once you have the tick removed, you should consider sending it to a lab for testing for tick-borne disease. Not all ticks transmit disease, so consult websites like www.tickencounter.org to determine if you can benefit from this service. Ticks can be sent to UMass' Laboratory of Medical Zoology for accurate testing of the most common tick-borne infections.

Please visit www.TickReport.com for more info.